

The background features a dark blue gradient with a starry space pattern. On the left side, there are several technical diagrams, including a large circular scale with numerical markings from 140 to 260 and various circular gauges with arrows and partial rings.

GETTING STARTED

FIRST TIME SETUP AND LOGIN

NEBULA[™]
AN ANTF VIRTUAL OPERATING ENVIROMENT

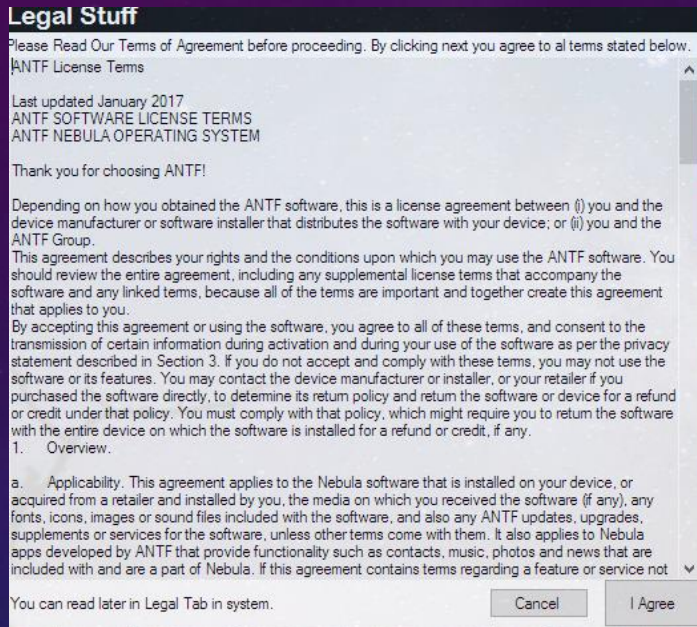
STARTING THE APPLICATION



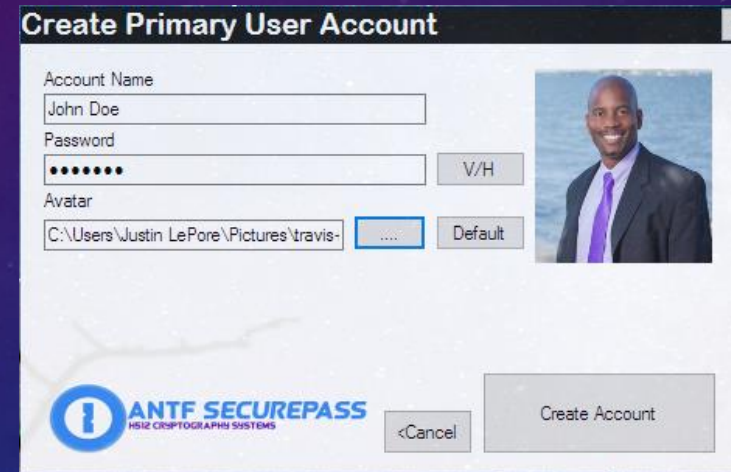
← Click on This Icon on
Your Windows Desktop

Afterward, Nebula Will Launch. If This is your First
time it will proceed to Account Setup. This is the
primary account and has Administrator Credentials

FIRST TIME SETUP



Step 1: Read and Agree to ANTF's Terms and Conditions



Step 2: Create Your First Account.

- Account name is what you want to call it
- Create A Password (cannot be blank)
- Choose an Avatar Image. If you don't have one hit Default.

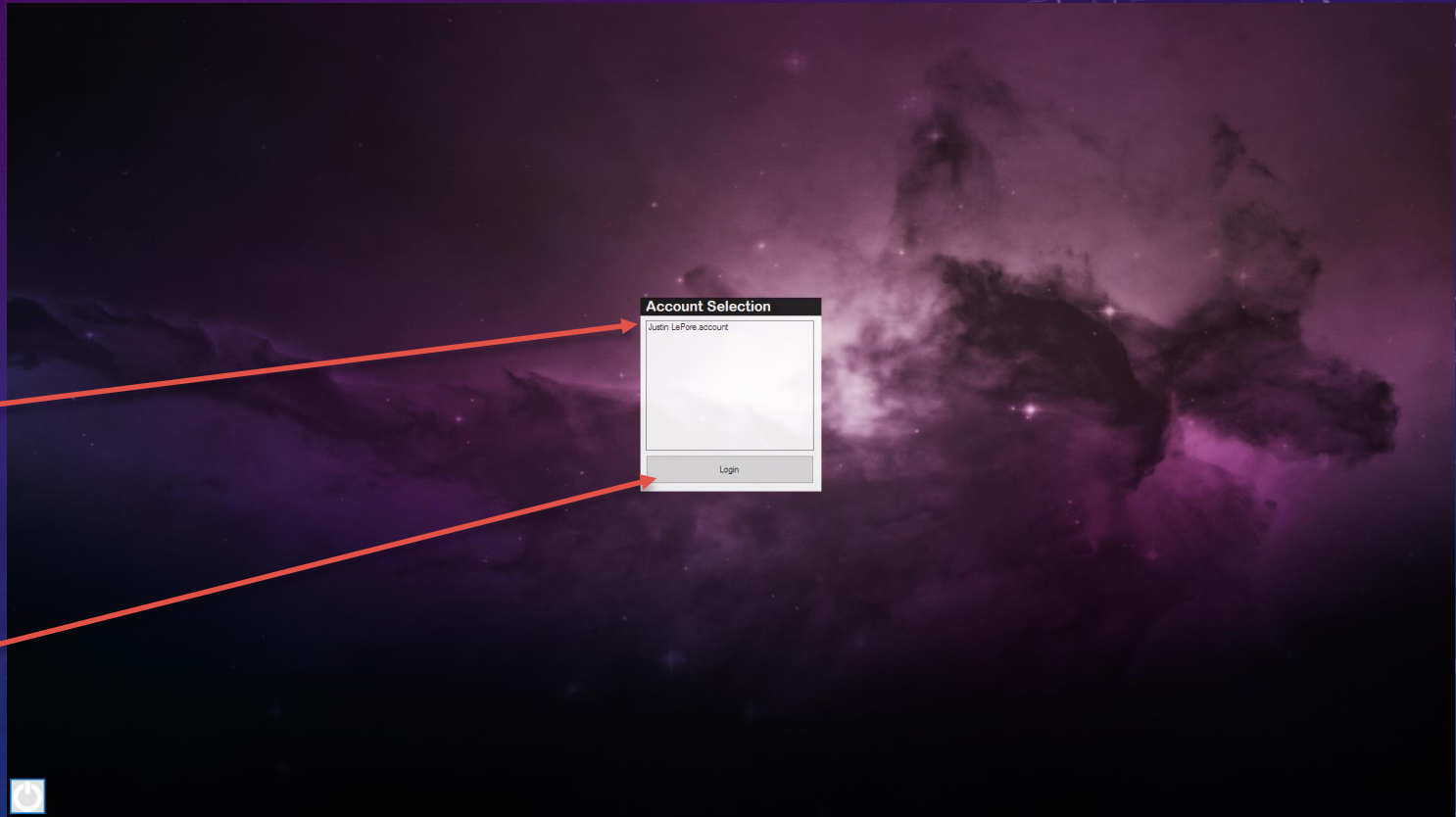
Once You are done hit Create Account

FIRST TIME SETUP

Select Account To Login

Press Login Once Account
is Selected

Shutdown System



This is the Account Selection Menu

FIRST TIME SETUP

Will let you go back to account selection

Shows Account Standing and provides an explanation

Shutdown System



Press To Sign In or Press Enter

Show/Hide Password

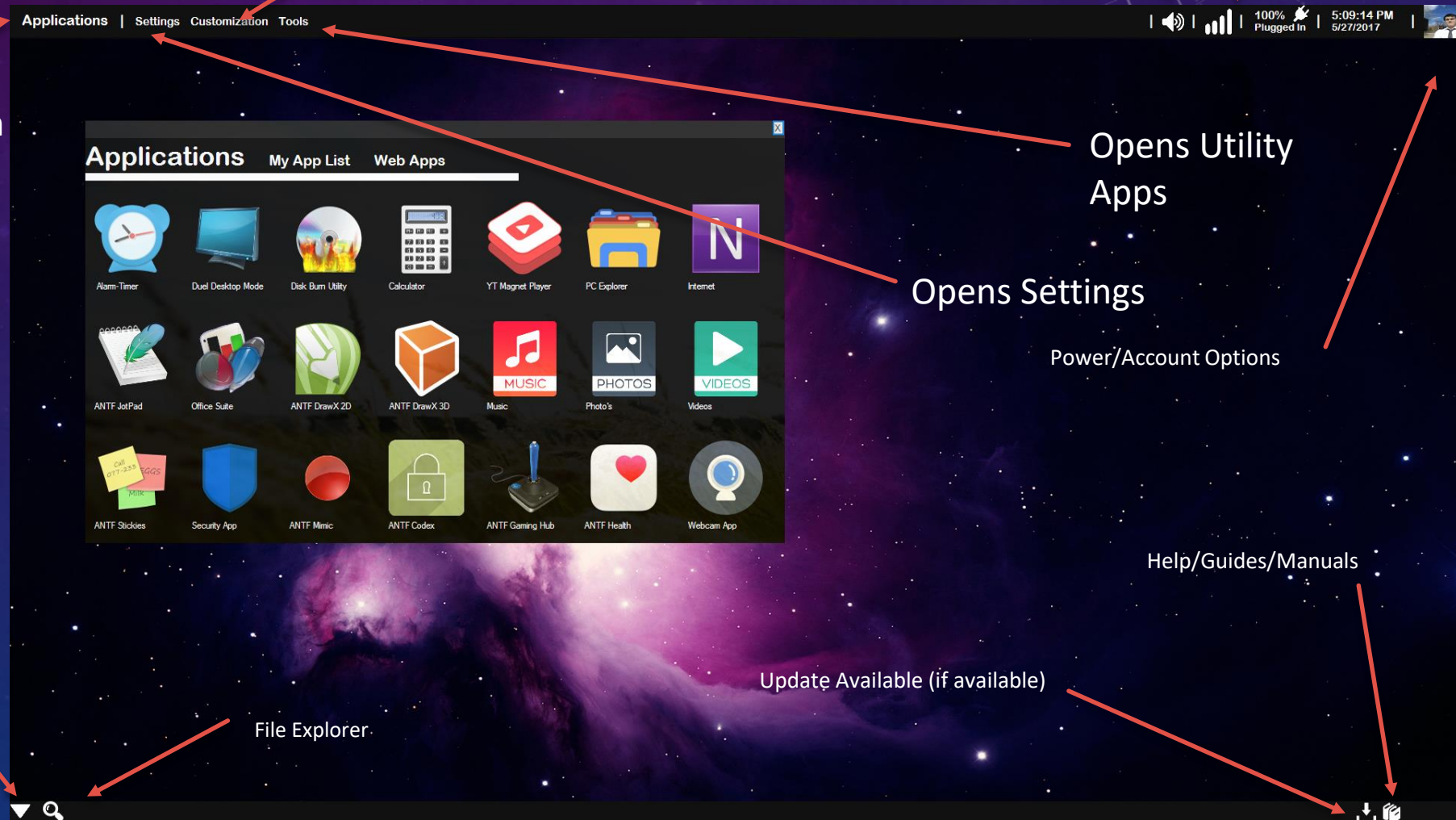
This is the login Screen.

YOU HAVE ARRIVED → THE DESKTOP

Sound/Mic/Volume Options

Network
Info/Power/Date.Time

Change Wallpaper



Opens Application Menus (As shown on screen)

Did You Know?

You can web search on desktop by double clicking the desktop surface or double click to hide search.

Opens Utility Apps

Opens Settings

Power/Account Options

Help/Guides/Manuals

Pushes Desktop To Back To Reveal Hidden Windows/Windows Apps

Update Available (if available)

File Explorer

THE FILE EXPLORER

Did You Know?

The app will attempt to open files in ANTF compatible applications unless you tell it not to. But their execution in an external app is not guaranteed due to software and older Windows inconsistencies.

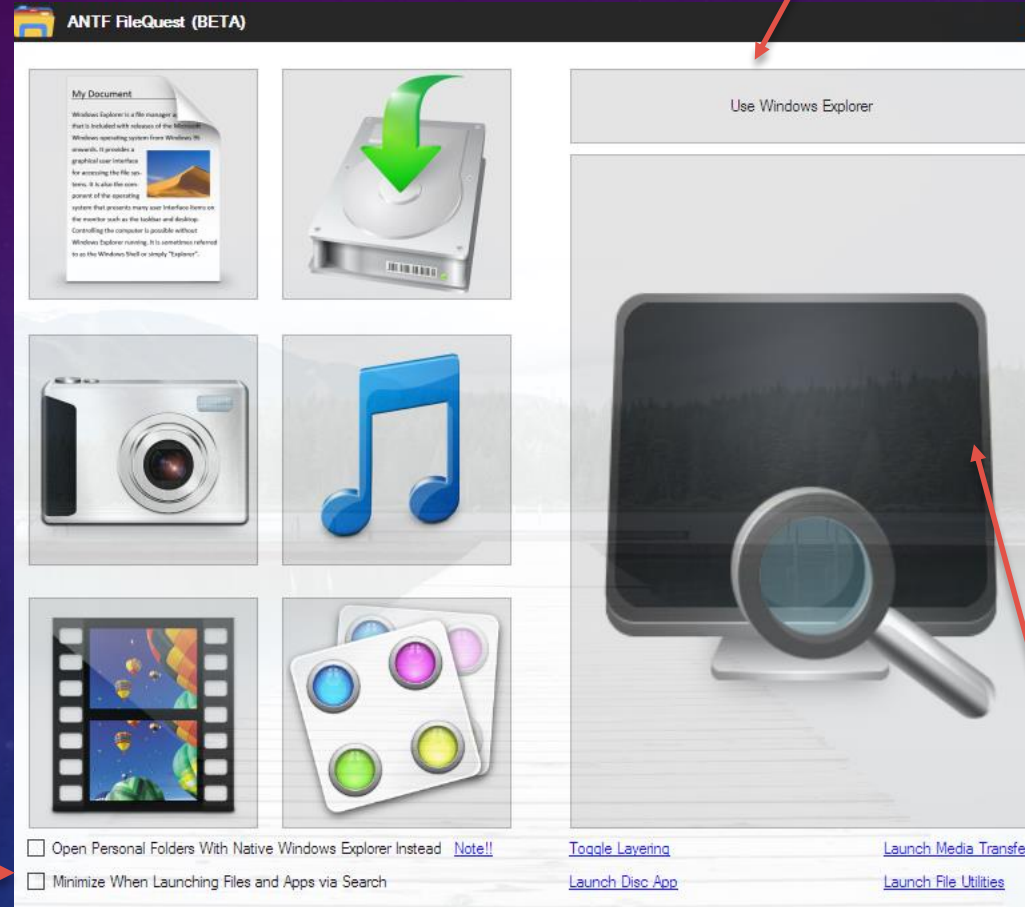
Open ANTF Nebula User Account folders

Launch and Behavior Options

Additional Options and Behaviors

Search Entire PC

Launch Generic Windows Explorer window



APPS MENU

Selected Tab (larger text)

Personal/Custom App List

Web Apps (like Facebook)

Click on an App
To Run it



THE SETTINGS MENU

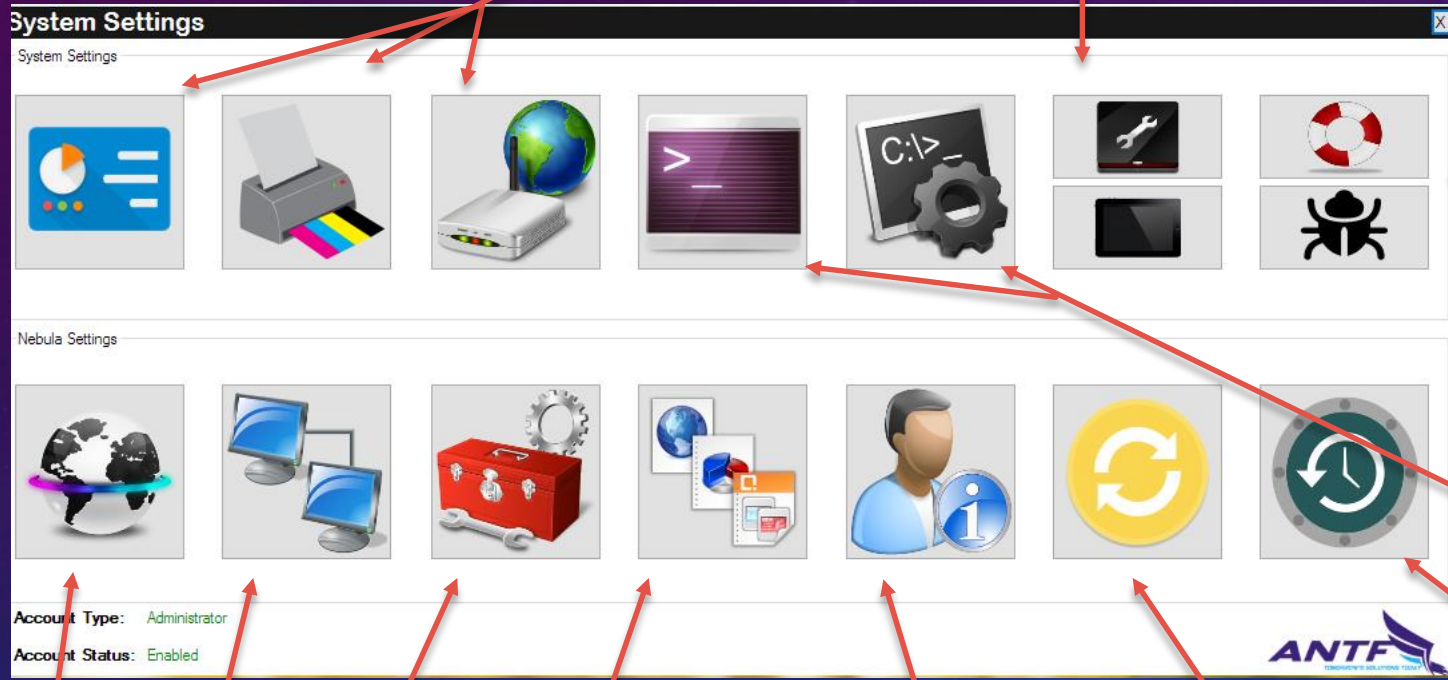
Windows Control Panel Apps

Top(Data Registry) Bottom(Tablet Mode)

Top(Help) Bottom(Report Bug)

Left(ANTF Terminal) Right(Windows CMD)

ANTF System Recovery/Reset Options



ANTF Connection Guide

System Monitor Tools

Set App Defaults

Account Management
-Create/Delete/Edit Accounts

Check For Updates

Network Mgmt (Business)
Coming Soon

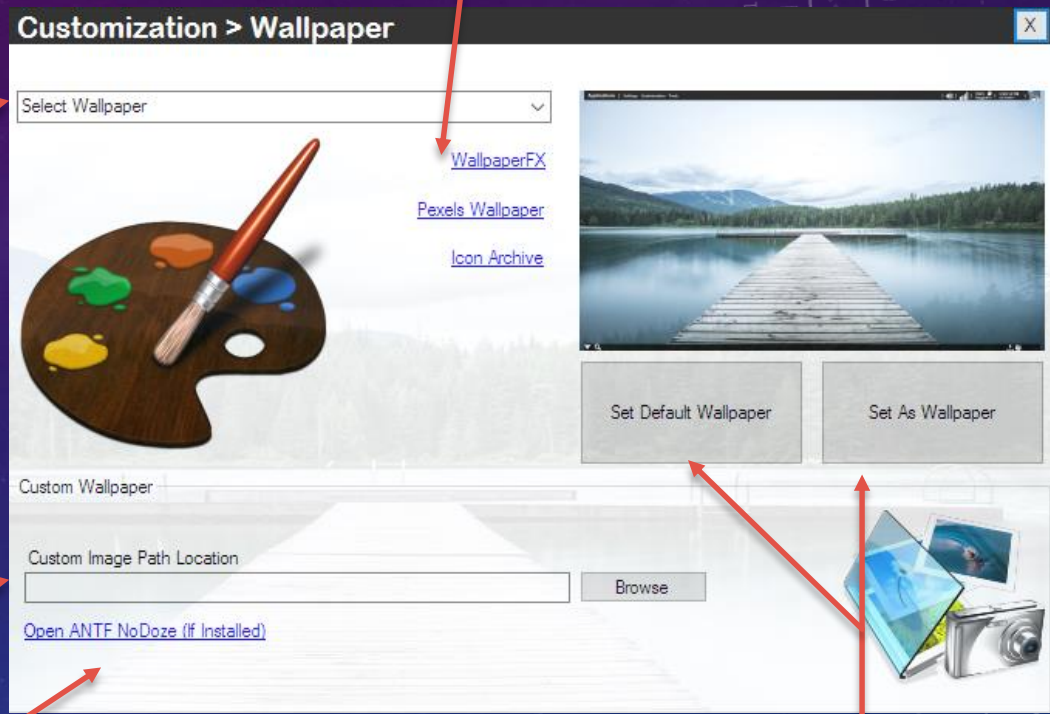
CUSTOMIZATION MENU

This dropdown features an Assortment of wallpapers to pick from

Or you can pick your own From your PC

(Optional Install) ANTF NoDoze prevents PC from sleeping

Get Additional Wallpapers and Icons

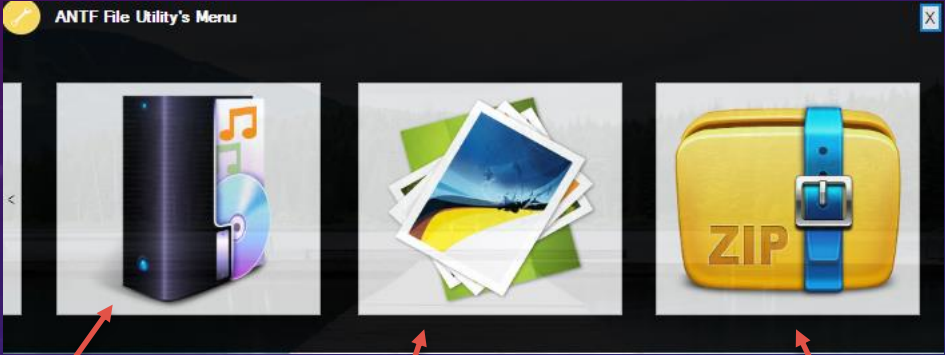


Left(Default Wallpaper)

Right(Save Selected Wallpaper)

UTILITY MENU

Go Back To Apps



Audio File Conversion



Image File Conversion



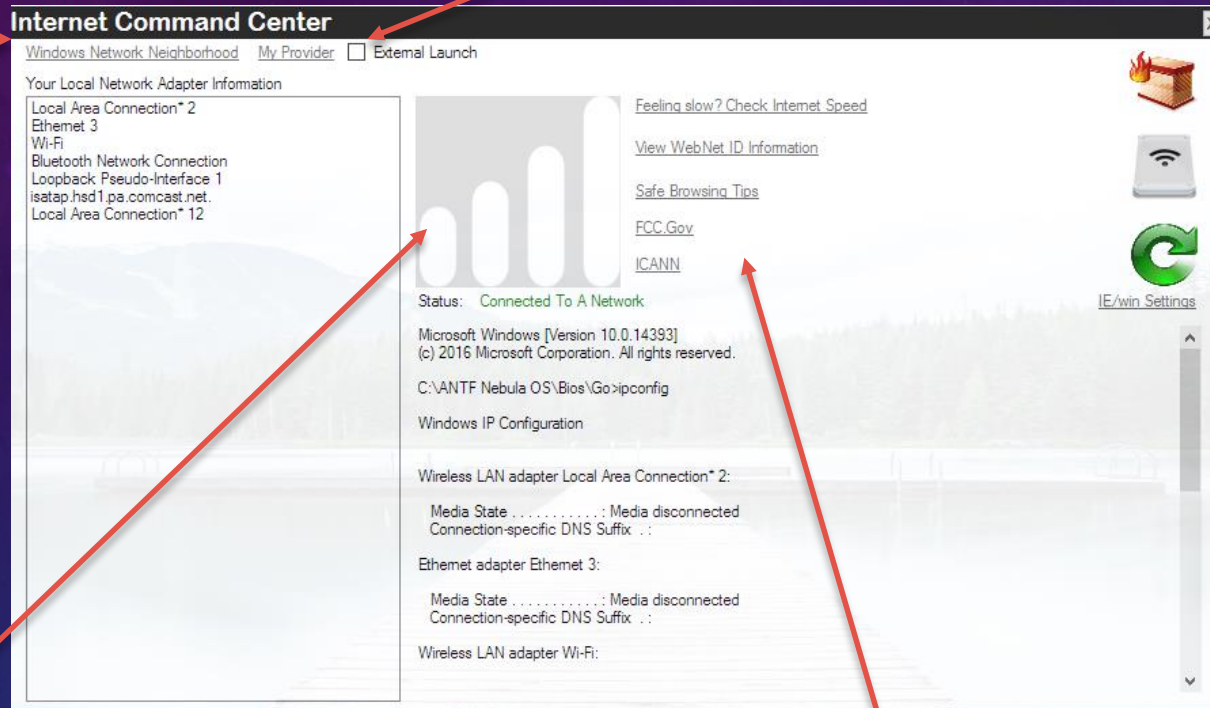
Zip/Archive Options



CONNECTION CENTER

Left(Visit Your ISP Page) Right(Launch Websites on app with windows Browser)

Control Panel App



Known Network Adaptor List

Signal/Connected or Not

Useful Web Links


Windows Firewall

Router IP Page

Refresh Data/Control Panel Options

Ipconfig Information (Network Info)

POWER OPTIONS



The image shows a screenshot of the 'User Menu' interface. The window title is 'User Menu'. On the left, there is a user profile picture of a man in a suit. Below the picture are two icons: a person with a circular arrow (Switch User) and a wrench (Open Settings). On the right, there are two sections of power options:

- ANTF System Power Options:**
 - Lock Screen (cyan button)
 - Lock Screen + Alarm (teal button)
 - Restart NebulaOS (green button)
 - Force Close ANTF Nebula (red button)
 - Shut Down NebulaOS (green button)
 - Reboot To ANTF Recovery Mode (orange button)
- Windows Power Options:**
 - Put Computer to Sleep (grey button)
 - Restart Computer (grey button)
 - Shut Down Computer (grey button)

Red arrows point from text labels to specific elements in the interface:

- 'Lock Screen' points to the 'Lock Screen' button in the ANTF System Power Options section.
- 'ANTF Nebula Power Options' points to the 'Force Close ANTF Nebula' button in the ANTF System Power Options section.
- 'Switch User' points to the 'Switch User' icon (person with circular arrow).
- 'Open Settings' points to the 'Open Settings' icon (wrench).
- 'Windows System Power Options' points to the 'Put Computer to Sleep' button in the Windows Power Options section.